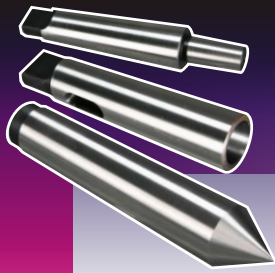


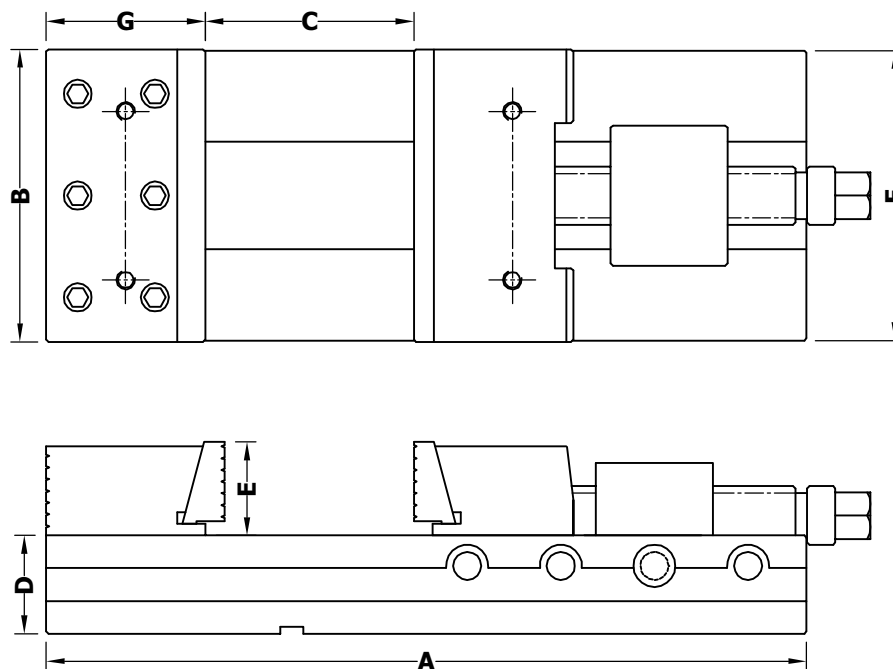
High Performance Quality Products...

# Machine Tool Accessories



### Technical Features :

- Steel Body with all wearing surfaces are hardened and ground.
- Mechanical Clamping System.
- Repetitive Gripping Accuracy is within 0.020mm.
- Very Quick Stroke adjustment.
- Reversible fixed Jaw.
- Moveable Jaw has tilting effect which allows to clamp asymmetrical parts.
- Complete delivered with hard crank and work piece Locator.
- Additional different types of Jaws for different work pieces.



### Dimensional Data

Type 10100 Precision Machine Vice								
Order Code	Size	A	B	C	D	E	F	G
5100125	125	325	125	0 - 130	42	40	123	77
5100150	150	425	150	0 - 200	51	52	148	84
5100175	175	475	175	0 - 225	58	58	173	93
5100200	200	525	200	0 - 250	66	66	198	105

**SHARP** Machine Vices are designed in such a way to increase production with in given tolerances of job with high gripping.

It is made of Nickle Chrome alloy steel, all the surfaces are hardened upto 60 HRC. to give more life.

All the surfaces are precision ground to give more accuracy and gripping.

Interchangeable Jaws to clamp different types of components.

[www.sharpchucks.com](http://www.sharpchucks.com)