

High Performance Quality Products...

Power Chucks



Standard Accessories:
 Reversible Top hard Jaws- 1 Set
 Soft Jaws- 1 Set
 Allen Key- 1 Pc
 Key for Stroke Adjustment - 1 Pc
 (only in open Center)



Type 7600 (Power Chuck Eccentric Compensation / Jaw Compensation Direct Mount)

Chuck Size (MM)	Chuck Size (Inches)	Short Taper	Through Hole		2 Jaw		3 Jaw	
165	6 1/2"	A2-5	----		15621655		15631655	
200	8"	A2-5	----		15622005		15632005	
200	8"	A2-6	----		15622006		15632006	
250	10"	A2-6	----		15622506		15632506	
250	10"	A2-8	----		15622508		15632508	
315	12 1/2"	A2-8	----		15623158		15633158	
315	12 1/2"	A2-11	----		156231511		156331511	

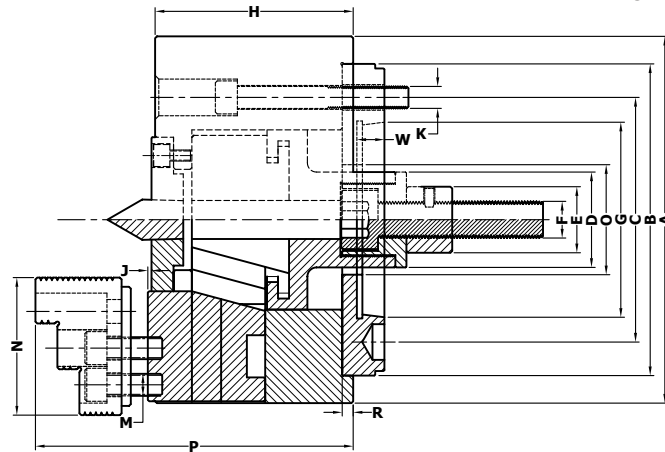
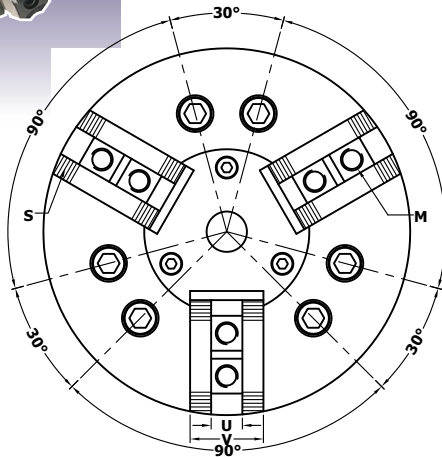
High Performance Quality Products...

Power



SHARP®

CONSISTENT QUALITY
LONGER LIFE



Dimensional Data

Chuck Size	165mm	200mm	200mm	250mm	250mm	315mm	315mm
A	170	210	210	254	254	315	315
B	140	170	170	220	220	220	300
C	104.8	104.8	133.4	133.4	171.4	171.4	235
Taper Nose	A2-5	A2-5	A2-6	A2-6	A2-8	A2-8	A2-11
D	40	52	52	60	60	60	60
E	32	40	40	50	50	55	55
F	M16	M20	M20	M20	M20	M24	M24
G	82.563	82.563	106.375	106.375	139.719	139.719	196.869
H	100	102	102	113	113	122	122
J	4	4	4	5	5	5	5
K	6 x M10	6 x M10	6 x M12	6 x M12	6 x M16	6 x M16	6 x M18
M	M10	M12	M12	M12	M12	M14	M14
N	72	87	87	100	100	107	107
O	50	60	60	70	70	70	70
P	162	186	183	192	190	194	195
R	5	5	5	5	5	5	5
S	1/16" x 90°	1/16" x 90°	1/16" x 90°	1/16" x 90°	1/16" x 90°	1/16" x 90°	1/16" x 90°
U	12	14	14	16	16	18	18
V	32	37	37	40	40	50	50
W	15	15	16	16	18	18	20

Note: Serrations 1.5 x 60° are on request.

Technical Data

Max. RPM	3000	2800	2800	2200	2200	1800	1800
Jaw Stroke (Per Jaw)	9	9.2	9.2	11.6	11.6	11.6	11.6
Plunger Stroke (Max.)	20	20	20	25	25	25	25
Draw Bar Pull (Max. Kgf.)	1800	2500	2500	3100	3100	4000	4000
Gripping Force (Max. Kgf.)	5000	6800	6800	9500	9500	12500	12500
Jaw Compensation (on Dia.)	3.5	4	4	4	4	4	4

www.sharpchucks.com