

High Performance Quality Products...

Power Chucks



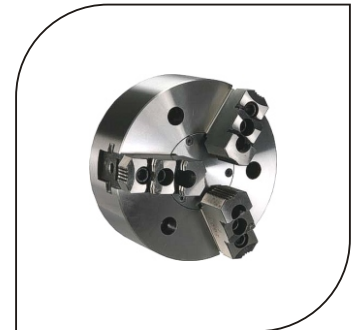
SHARP
CONSISTENT QUALITY
LONGER LIFE



Standard Accessories:
Reversible Top hard Jaws- 1 Set
Soft Jaws- 1 Set
Allen Key- 1 Pc
Key for Stroke Adjustment - 1 Pc
(only in open Center)

Type 7100 (Power Chuck Close Centre)

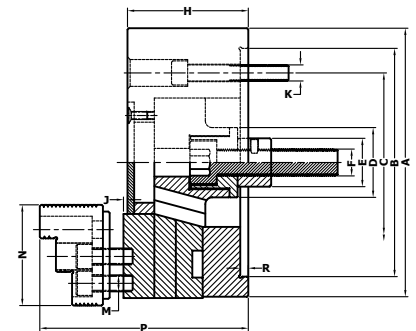
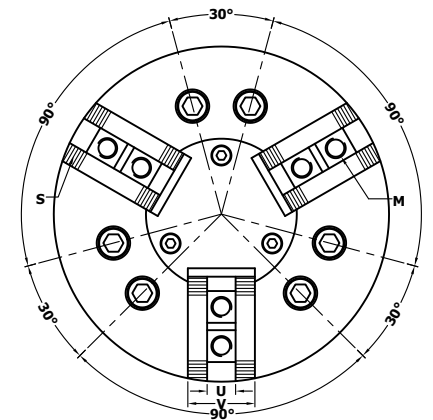
Chuck Size (MM)	Chuck Size (Inches)	Short Taper	Through Hole	2 Jaw	3 Jaw	4 Jaw
125	5"	----	----	1512125	1513125	----
165	6 1/2"	----	----	1512165	1513165	1514165
200	8"	----	----	1512200	1513200	1514200
250	10"	----	----	1512250	1513250	1514250
315	12 1/2"	----	----	1512315	1513315	1514315



Dimensional Data

Chuck Size	125mm	165mm	200mm	250mm	315mm
A	125	170	210	254	315
B H6	105	140	170	220	220
C	82.6	104.8	133.4	171.4	171.4
D	M24 x 1.5	40	52	60	60
E	----	32	40	50	55
F	----	M16	M20	M20	M24
H	52	78.5	82	94	107
J	7	4	4	5	5
K	3 x M10	6 x M10	6 x M12	6 x M16	6 x M16
M	M8	M10	M12	M12	M14
N	57	72	87	100	107
P	103	124	146	152	160
R	5	5	5	5	5
S	1/16" x 90°	1/16" x 90°	1/16" x 90°	1/16" x 90°	1/16" x 90°
U	10	12	14	16	18
V	25	32	37	40	50

Note: Serrations 1.5 x 60° are on request.



Technical Data

Max. RPM	3000	3800	3100	2800	2300
Jaw Stroke Dia	8	9	9.2	11.6	11.6
Plunger Stroke (Max.)	19	20	20	25	25
Draw Bar Pull (Max. Kgf.)	900	1800	2500	3100	4000
Gripping Force (Max. Kgf.)	1500	5000	6800	9500	12500

www.sharpchucks.com